

# Human LIGHT/TNFSF14 Trimer Protein

Cat. No. LGT-HM132

## Description

<b>Source</b>	Recombinant Human LIGHT/TNFSF14 Trimer Protein is expressed from HEK293 with His tag and Flag tag at the N-Terminus. It contains Ser89-Val240 Trimer.
<b>Accession</b>	O43557-1
<b>Molecular Weight</b>	The protein has a predicted MW of 52.4 kDa. Due to glycosylation, the protein migrates to 53-140 kDa under Non reducing (N) condition based on Tris-Bis PAGE result.
<b>Endotoxin</b>	Less than 1EU per µg by the LAL method.
<b>Purity</b>	> 90% as determined by Tris-Bis PAGE > 95% as determined by HPLC

## Formulation and Storage

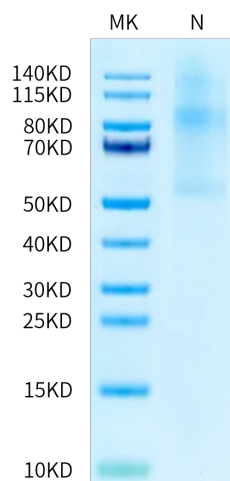
<b>Formulation</b>	Lyophilized from 0.22µm filtered solution in PBS (pH 7.4). Normally 8% trehalose is added as protectant before lyophilization.
<b>Reconstitution</b>	Centrifuge the tube before opening. Reconstituting to a concentration more than 100 µg/ml is recommended. Dissolve the lyophilized protein in distilled water.
<b>Storage</b>	-20 to -80°C for 12 months as supplied from date of receipt. -80°C for 3-6 months after reconstitution. 2-8°C for 2-7 days after reconstitution. Recommend to aliquot the protein into smaller quantities for optimal storage. Please minimize freeze-thaw cycles.

## Background

LIGHT, also known as tumor necrosis factor superfamily member 14 (TNFSF14), is a secreted protein of the TNF superfamily. It is recognized by herpesvirus entry mediator (HVEM), as well as decoy receptor 3. This protein has been shown to stimulate the proliferation of T cells, and trigger apoptosis of various tumor cells.

## Assay Data

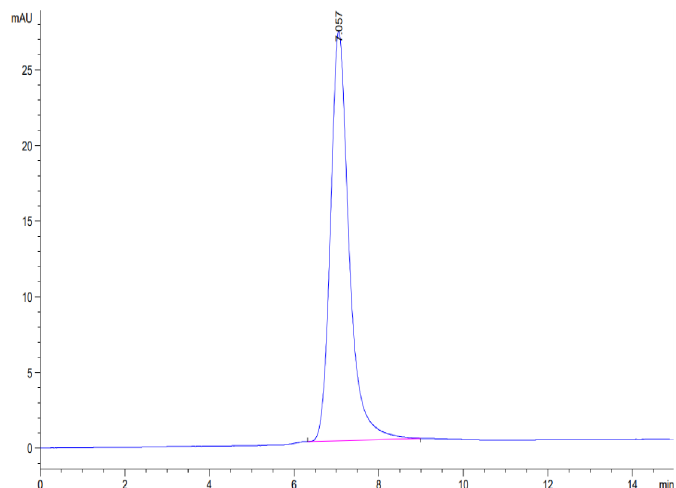
### Tris-Bis PAGE



Human LIGHT Trimer on Tris-Bis PAGE under Non reducing (N) condition. The purity is greater than 90%.

### SEC-HPLC

Assay Data

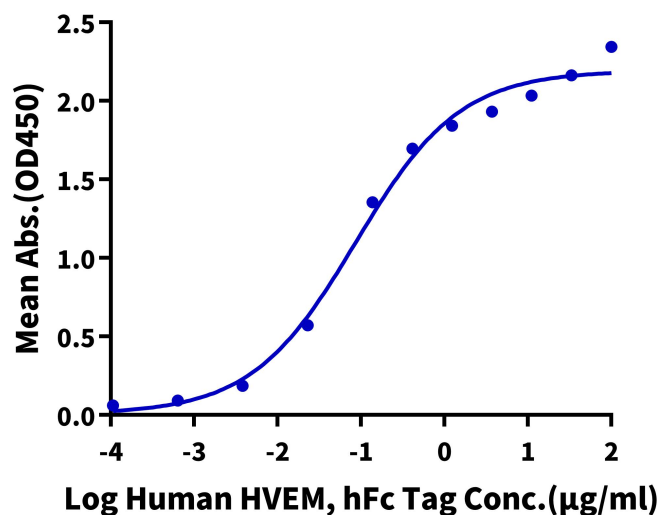


The purity of Human LIGHT Trimer is greater than 95% as determined by SEC-HPLC.

ELISA Data

**Human LIGHT (Trimer), His Tag ELISA**

0.1µg Human LIGHT (Trimer), His Tag Per Well



Immobilized Human LIGHT Trimer, His tag at 1µg/ml (100µl/well) on the plate. Dose response curve for Human HVEM, hFc Tag with the EC50 of 86.3ng/ml determined by ELISA.